

INSECTICIDES



APHOX

Pirimicarb
Aphid and Woolly Aphid Control.

1kg

280 - 560g/ha

code APH001



BISCAYA

Thiacloprid
A systemic insecticide for control of Pollen Beetles, Aphids and Orange
Wheat Blossom Midge.

5L

0.5L/ha

code BISC03



BORNEO

Etoxazole
For the control of Red Spider Mite in aubergines and tomatoes.

250mls

30mls/100L of water - 500mls/ha

code BORN01



CALYPSO

Thiacloprid
Rosy Apple Aphid control.

1L

250mls/ha

code CALY01



CLOSER

Sulfoxaflor
A new foliar-applied selective insecticide for the control of aphid and scale insect
species in a range of crops.

1L

200mls/ha

code CLOS01



CONSERVE

Spinosad
Western Flower Thrip control.

1L

120g/1L

code CONS01



INSECTICIDES



DECIS EC

Deltamethrin

Controls Aphids, Caterpillars and other pests in a wide range of crops.

1L

70mls/100L of water
170 - 300mls/ha

code DEC103



DYNAMEC

Abamectin

Two Spotted Spider Mite, Western Flower Thrip and Leaf Miner control.

250mls

1L

25mls/100L spray to run off

code DYNA

code DYNA01



EAGLE GREEN CARE

Reduces Nematode population in golf courses and sports grounds.

5L

20L/ha

code EAGL02



EXEMPTOR

Thiacloprid

A granular systemic and protectant insecticide for incorporating into compost for the control of Black Vine Weevil larvae, Sciarids, Glasshouse Whiteflies, Aphids and Leaf Beetles on ornamental plants and hardy nursery stock (outdoor and protected).

5kg

25kg

300g per m³ compost

code EXEM01

code EXEM02



FLIPPER (IPM)

FLIPPER is a highly effective broad-spectrum contact insecticide/acaricide to control Whitefly, Aphids, Spider Mites on protected crops of Tomatoes, Cucumbers and Strawberries.

10L

code FLIP01



FLORAMITE 240 SC

Bifenazate

Two Spotted Spider Mite control.

250mls

400 - 600mls/ha

code FLOR01



INSECTICIDES



GAZELLE

500g

code GAZE01

Acetamiprid

250 - 500g/ha

Broad spectrum insecticide, active against a wide range of insect pests.



KARATE ZEON

250mls

code KARA01

Lambda-Cyhalothrin

50 - 150mls/ha

To control Aphids, Flea and Pollen Beetle, Cutworm and Caterpillars.



LEPINOX PLUS (IPM)

1kg

code LEPI01

Contains *Bacillus thuringiensis ssp kurstaki*. Bio-insecticide for the control of lepidopteran pests. Highly selective and ideal for use as part of an Integrated Pest Management (IPM) programme. Approved for use on many crops including a range of top fruit, soft fruit, vegetables, salads, herbs and protected crops.



MASAI

1kg

code MASA01

Tebufenpyrad

50 - 100g/100L high volume

To control Aphid and Spider Mites.



MET52 (IPM)

2.5kg

code MET503

10kg

code MET502

500g/m³

Based on *Metarhizium anisopliae*

Bio-insecticide for incorporation into growing media for Vine Weevil larvae control in protected and outdoor soft fruit, ornamentals, including trees.



MOVENTO

1L

code MOVE01

Spirotetramat

0.5L/ha

A Ketoenol insecticide for control of Aphids and Whitefly.



INSECTICIDES



NATURALIS-L (IPM)

1L

code NATU01

Naturalis-L is an oil dispersion formulation containing *Beauveria bassiana*. A bio-insecticide for the control of Whitefly including the Glasshouse Whitefly in all edible crops (protected) and ornamental plant production (protected). Will also provide a reduction in Thrips including Western Flower Thrip.



PYRETHRUM 5 EC

250mls

code PYRE01

1L

code PYRE02

Pyrethrins
Natural Organic Insecticide for use against chewing and sucking pests.

1.1 - 2.4L/ha



ROSE CLEAR ULTRA

200mls

code ROSE07

Triticonazole, Acetamiprid
Combined pest and disease control.

200mls/20L water



SB PLANT INVIGORATOR double strength

1L

code SBPI07

5L

code SBPI06

Growth Stimulant and Insecticide.
Whitefly, Aphid, Spider Mite and Mealybug control.
Can be used on all edible and ornamental crops.

100mls/100L water



SB PLANT INVIGORATOR

100mls/10L

250mls

code SBPI03

500mls

code SBPI05

500mls (RTU)

code SBPI04

Growth Stimulant and Insecticide. Whitefly, Aphid, Spider Mite and Mealybug control. Can be used on all edible and ornamental crops. Available in a 500mls Ready-To-Use Trigger, 250mls and 500mls concentrate.



STEWARD

250g

code STEW01

Indoxacarb
Caterpillar control in protected Cucumber, Courgette, Marrow and Winter Squash.

12.5g/100L water



INSECTICIDES



TAFARI

Pymetrozine
Aphid control in ornamental plants.

250g/m

code TAF01

20g/100L spray to run off



TRACER

Spinosad
A selective insecticide for use in top fruit and field Brassicas for the control of Caterpillar pests and in Allium crops for useful control of Thrips.

0.5L

code TRAC01

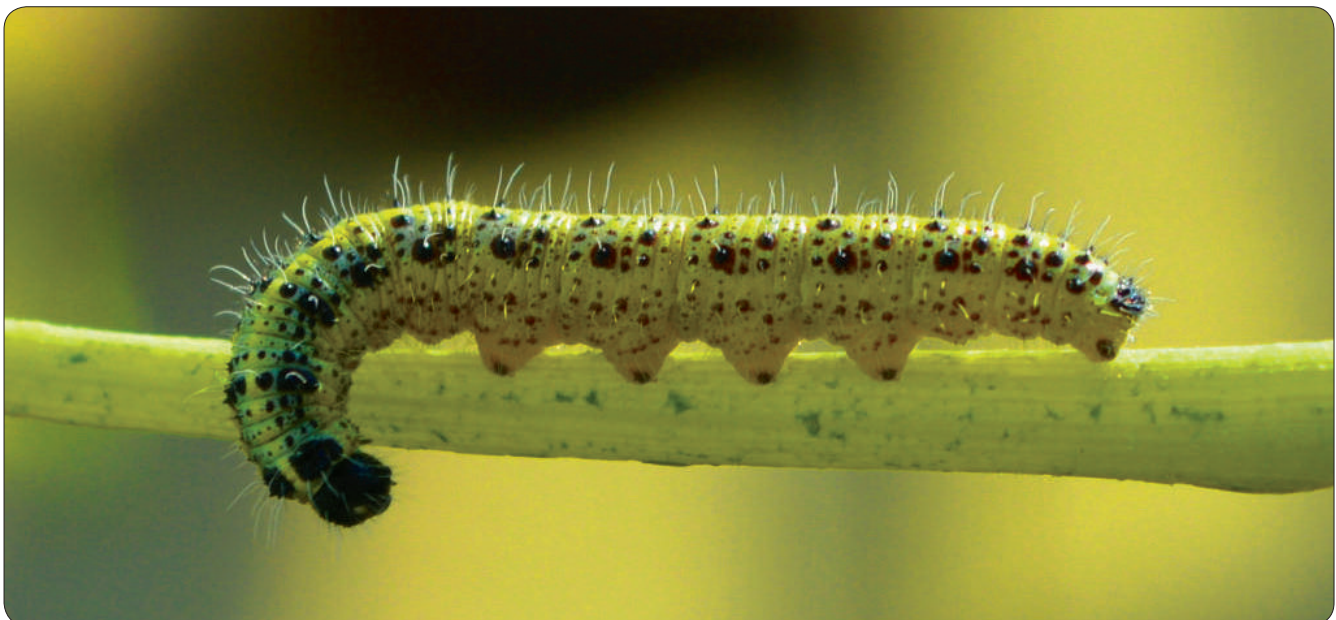
200mls/ha



VITAX GREENHOUSE FUMIGATOR

Permethrin
For use against various flying and crawling insects. For indoor use only.
120m³ for flying insects
7.5m³ for ants, cockroaches and crawling insects

code FUME02



Note: Before using any product it is important that users read and abide by the current full label instructions. Use pesticides safely, always read the label before application. Disposal of empty pesticide containers - Please ask for information.

All users of Professional Use Pesticides must be registered with the DAFM (Department of Agriculture, Food and the Marine) pesticides section. Unregistered individuals may not apply Professional Use Pesticides – contact DAFM for full details: www.pcs.agriculture.gov.ie/sud