

BIO-UPDATE: RED SPIDER MITES

Author: Neil Helyer

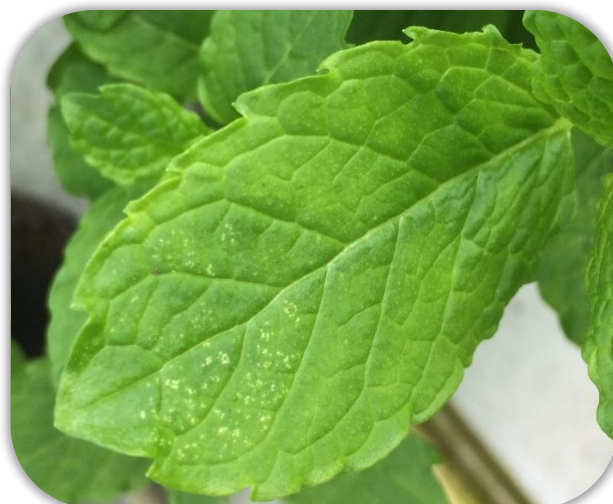
Summer 2016

The red or two-spotted spider mite is a major pest of almost all protected and some outdoor crops. At this time of year as environmental conditions are at their hottest and driest, populations of the pest can develop quickly and cause significant damage.



Spider mites and eggs

Spider mites feed on the contents of plant cells causing mottling, discolouration and eventually stunting of growth. Heavy infestations often result in the creation of webbing around foliage, flowers and fruits.



Leaf mottling: spider mite feeding damage on mint

When infestations can be caught early, then the introduction of biological predators can be extremely effective. When damage is already significant and webbing is seen then it is recommended that a suitable pesticide spray is used to knock the population down before biocontrols are introduced.

Phytoseiulus persimilis

A highly effective curative predator that attacks all stages of spider mite



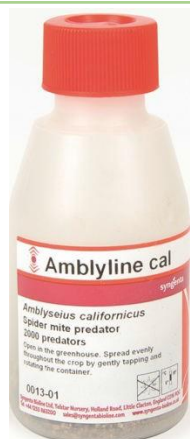
CROPS: *Phytoseiulus* can be used on any protected crop, edible or ornamental and can also be effective on outdoor soft fruit in the summer period.

USAGE: Release 10 mites per m². In low humidity conditions use 20 mites per m².
1 tube contains 2000 mites and treats up to 200 m².

NOTES: *Phytoseiulus* should be used as a curative treatment at the first sign of the pest. It will not establish as a preventative. Can be introduced across the whole crop or used as a spot treatment for localized infestations.

Product codes: PHYT01 (500ml bottle)
PHYT03 (30 ml vial)

Amblyseius californicus A preventative treatment for use in hot dry conditions. Used under license in glasshouses only.



TARGET PEST: Controls Two-Spotted Spider Mite and Fruit Tree Spider Mite.

USAGE: Release 10 mites per m² at 2-3 weekly intervals.
1 bottle contains 2000 mites and treats up to 200 m².

Product code: AMBL01 (sprinkler bottle)

Amblyseius andersoni A preventative treatment for use in all conditions, indoors and outdoors.



TARGET PEST: All common Spider Mites and Thrips.

USAGE: Gemini slow release sachets are active for a 6-week period. Hang sachets on plants or wires amongst the crop where emerging predators will have a chance to disperse. Hang sachets at a rate of 1 per m².
1 pack contains 100 sachets and treats up to 100 m².

NOTES: *A. andersoni* can survive in the absence of spider mite prey and must be introduced preventatively.

Product code: AMBL08 (100 Gemini twin sachets)

Other IPM Options

The following products are effective against spider mites and are IPM compatible when used as instructed in the product manuals and technical notes available from **NAD / Fargro**.



A contact acting product which is effective against most foliar pests. Does not require a spraying certificate to use.

Contains: Physical control surfactants

Rate of use: 1ml / 1 litre

Pack size: 1 Ltr / 5 Ltr

No PCS No. needed



A broad spectrum bioinsecticide with activity against mites, whitefly and thrips. Compatible with biological controls.

Contains: *Beauveria bassiana* ATCC 74040

Rate of use: Recommended at 1.5l/ha

Pack size: 1 Ltr

PCS No.: 04187



A contact and translaminar product with activity against mites, leafminers and thrips.

Contains: Abamectin

Rate of use:
25ml / 100 litre (spider mites),
50ml / 100 litre (thrips and leafminer)

Pack size: 250 mls / 1 Ltr

PCS No.: 05553

If you require any further advice on choosing or using products for the control of spider mites, or if you require any other technical advice then please contact NAD on 01-8437808.

Use plant protection products safely. Always read the label and product information before use.